



SOOKE REGION COMMUNITIES HEALTH NETWORK

ANNUAL GENERAL MEETING 2016 REPORT

BEBOVL
5010

Board Chair Report

In preparation for the Annual General Meeting I reviewed the many reports, committee, and Board minutes generated in this last year. As you read through the many accomplishments achieved through dedicated volunteers serving on the various committees and working groups, with the assistance of our two part-time coordinators; I would like to take a moment to sincerely thank them for their continued support, guidance and hard work. The Sooke Region is well known for its spirit of volunteering that help to shape our communities to be the best that they can be. I would also like to acknowledge the families that support our volunteers through many hours they devote to our organization.

The Board’s meeting schedule switched from bi-monthly to monthly meetings to accommodate the workload this year. Much of our work resulted from the amalgamation of the Cooperative Association of Service Agencies (CASA) with the Sooke Region Community Health Initiative (SRCHI). Our new organization is now known as the Sooke Region Communities Health Network (SRCHN). We are still a registered non-profit cooperative having adopted CASA’s cooperative rules.

We continue to be actively engaged with the communities in our region and look for ways we can support their initiatives that fall within our mandate. In the next few weeks, thanks to a grant from the BC Healthy Communities Society, we will begin a commitment to assist the community of Port Renfrew to support their locally developed healthy living initiatives.

Going forward we look ahead to working with our communities, local and regional governments, Island Health, and organizations that are focused on health and social service improvements for everyone. We thank them for their continued confidence in our ability to provide value for their investments in our organization. We look forward to continued collaborative, community driven solutions that make all of our communities and their citizens healthier.

We have two Board members leaving us tonight. Marlene Barry has been a driving force in our organization both as our Volunteer Centre Coordinator and a member of the Board. We sincerely admire her passion for our organization as we evolved over the years and thank Marlene and acknowledge her family for their support.

Joining the Volunteer Centre as its new Coordinator is Dawn Tyndall-Humphreys, Dawn brings a wealth of relevant experience and boundless enthusiasm for her new role.

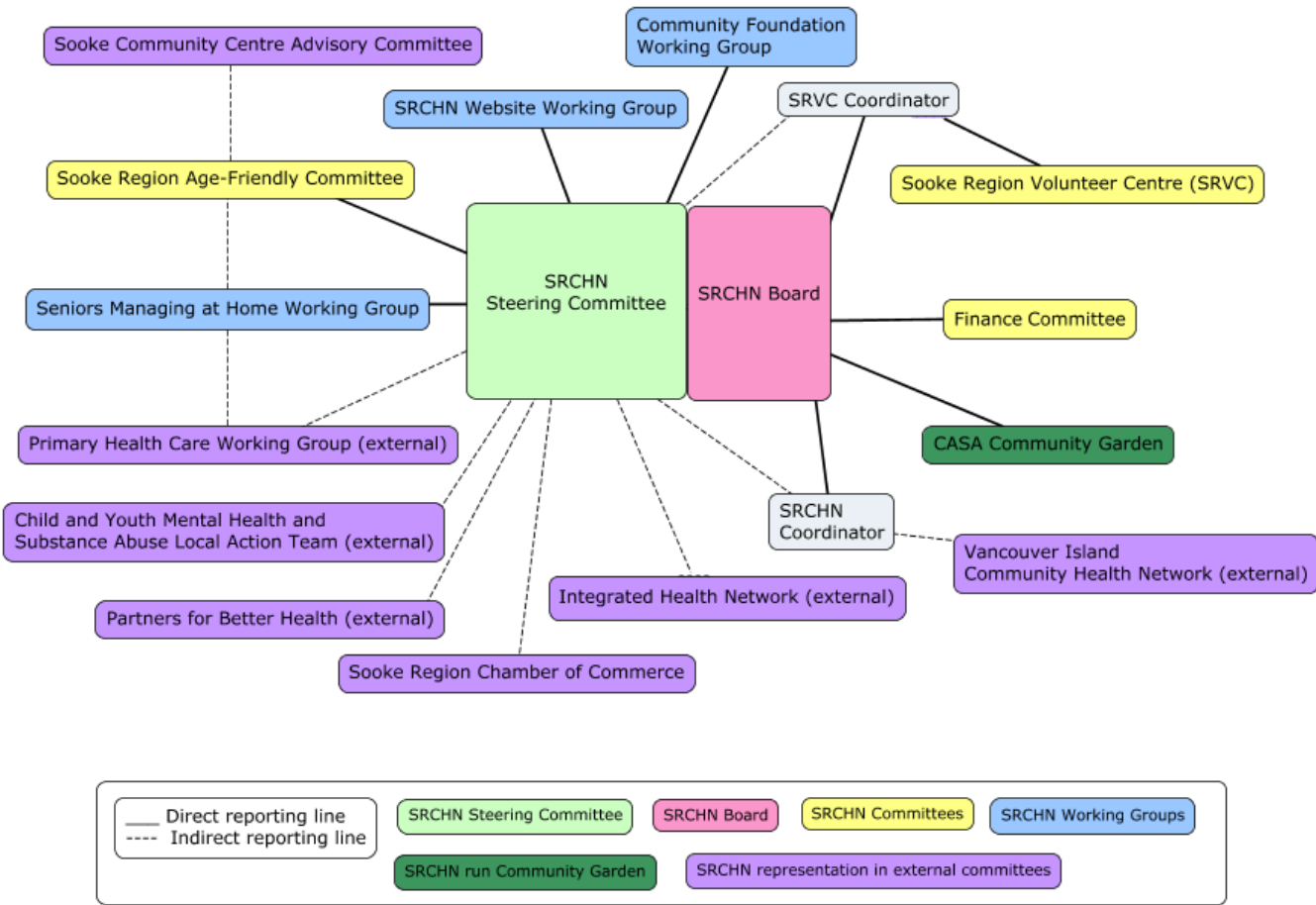
Geertrudy (Trudy) Vermaas is also leaving the Board, but is staying on as an active member of the Sooke Region Volunteer Centre. We sincerely thank Trudy for her service and wish her well in her continued volunteer role.

Respectfully Submitted,

Rick Robinson

Board Chair

Sooke Region Communities Health Network



Coordinators’ Reports

Sooke Region Volunteer Centre

It has been an interesting and rewarding year coordinating the Sooke Region Volunteer Centre. We've interviewed and guided individuals towards new and rewarding volunteer opportunities in our communities; organized and run a series of workshops to help organizations and their volunteers grown and expand. This was our second full year of operation from our office and we ran the 5th annual Sooke Region Volunteer Fair as well as moving to new digs, maintained the Sooke Region Resources website, and developed a database of volunteers and organizations. We're growing, learning and supporting along the way.

I would like to thank our own volunteer team, the people who helped us get where we are: Trudy, Caroline, Carol, Gill, Andrea, Sheila, Marilyn, Isaac, McKenzie, Jane, Shirley, Bonnie, Les, Ellen, and Malinda. I hope I haven't missed anyone. They have all been so helpful and brought their ideas and skills to the table. Big or small, their efforts have helped bring us to where we are now.

I welcome and pleased to introduce our new Coordinator, Dawn Tyndall-Humphreys, who I have great confidence in. She will lead the team to new heights and along paths I may not have considered.

It's been great working with all of you and serving my communities, the place I call home.

Respectfully Submitted,

Marlene Barry
Coordinator Sooke Region Volunteer Centre

Sooke Region Communities Health Network

The Sooke Region Communities Health Network is the admiration of other Communities Health Networks that are emerging on Vancouver Island, the cradle of the internationally embraced Healthy Communities philosophy. SRCHN continues to work on issues directly related to medical infrastructures such as more doctors to the region and x-ray diagnostic imaging. At the same time it is increasing its efforts on the side of community wellbeing for the entire Sooke Region. SRCHN has improved relations with political authorities through projects such as Seniors Managing at Home report and the newly established Port Renfrew community conversations project. Through these projects, closer ties have been made with all three First Nations in the region, namely Pacheedaht, T’Sou-ke and Scia’new.

The province’s Ministry of Health is encouraging the communities to develop self-sustaining health initiatives that are not always feasible for community budgets. Though SRCHN continues to seek project related grants, we are seeing the need for more sustainable funding for health and wellbeing projects in the long-term. SRCHN is in the process of establishing a Sooke Region Foundation that could assist in creating more stability and clarity of needed health services for all the communities in the Sooke Region to a certain degree. Due to the growing population especially in Sooke District and the increased sensitization of our organization outside of the region, support agencies are becoming more interested in expanding needed services to the area. With the blessing of the local authorities, we are encouraging this expansion to fulfill needs that have been identified through several past community consultation exercises.

With SRCHN’s boots on the ground approach, local and island-wide connections have been created or reinforced. SRCHN is also becoming more aware of issues and opportunities that are arising through the Communities Health Network, where experiences are exchanged with sister organizations, in addition to attending the Island Health Forum April 2016. Also its recent interaction with the regional Royal Canadian Mounted Police unit has included discussions around sensitization of services, referral possibilities and preventive action. Main populations that the SRCHN would like to focus particularly on in the future are: Youth, Seniors and those affected by Mental Health concerns.

Clearly established internal reporting lines and tools have facilitated transparency and information sharing internally and externally. In addition to the widely used Sooke Region Resources online tool supported by our Sooke Region Volunteer Centre, SRCHN has created its own website linked to social media outlets. To reinforce the branding process, an insignia has been selected from a regionally advertised logo contest and will be ready for its big reveal shortly.

A rewarding year through hard work and many valuable network connections!
To be continued.

Respectfully Submitted,

Christine Bossi
Coordinator Sooke Region Communities Health Network

Committees and Working Groups’ Accomplishments: July 2015 - June 2016

Board

- Merger of Cooperative Association of Service Agencies (CASA) and Sooke Region Community Health Initiative (CHI)
- Governance documents completed
- Board Officer positions descriptions

Steering Committee

- Invitation to external agencies to bring their relevant services to the region
- June 2016 –SRCHN logo selected
- Provides a format for the vital exchange of information and ideas between member organizations and community members

Sooke Region Volunteer Centre Steering Committee

- Continued to be a conduit for volunteer opportunities and support for societies
- Upkeep of Sooke Region Resources website
- Hosted 5th annual Volunteer Fair
- New SRVC Coordinator
- Policies and Procedures for Volunteer Centre
- Free income tax advice for the less advantaged

Sooke Region Age-Friendly Committee

- Attained Age-Friendly status for District of Sooke
- May 2016 – Updated HELP services brochure
- Participating in Sooke Community Centre working group

Finance Committee

- Merge of financials between CASA and CHI

Seniors Managing at Home Working Group

- Second Seniors Managing at Home report for entire Sooke Region

Website Working Group

- Fine-tuning of Sooke Region Resources website
- Establishment of the SRCHN website

Community Foundation Working Group

- Seeking legal advice on how to establish a foundation that would benefit the health and well-being of the Sooke Region

CASA Community Garden

- Handed over to SRCHN in April 2016
- Increased number of volunteers from 3 to 11 in a few months
- May 2016: Secured District of Sooke capital grant amounting to \$7,000.00 for renovation. Other grants have been requested for administration fees and programming

Sooke Region Communities Health Network

Balance Sheet As at 03/31/2016

ASSET

Current Assets

Operating Bank Acct (CCS: 182790)	32,095.06
Coast Capital - VC	10,637.17
Savings Bank Acct (CC 200)	2,567.20
Bank Shares	5.00
Bank Shares - gaming	5.00
GST Receivable	715.37
Total: Current Assets	46,024.80

Capital Assets

Computer Hardware	2,896.80	
Computer Hardware: Depreciation	-1,193.00	
Net Computer Hardware		1,703.80
Equipment and Furniture	80,206.26	
Equipment and Furniture: Dep	-53,648.20	
Net Equipment & Furniture		26,558.06
Total: Capital Assets		28,261.86

TOTAL ASSET	74,286.66
--------------------	------------------

LIABILITY

Current Liabilities

Security Deposit	1,959.35
Membership - CASA	420.00
Total: Current Liabilities	2,379.35

Special Purpose Funds

Assets for Operation	28,261.86
Total Special Purpose Funds	28,261.86

TOTAL LIABILITY	30,641.21
------------------------	------------------

EQUITY

Member Equity

Retained Earnings	32,808.36
Current Earnings	10,837.09
Total: Member Equity	43,645.45

TOTAL EQUITY	43,645.45
---------------------	------------------

LIABILITIES AND EQUITY	74,286.66
-------------------------------	------------------

	CASA	NH	CHI	VC	Total
REVENUE					
Donations					
Non-Charitable Donation (individ)				427.00	
Non-Chart. Donation/Grant		15.00		630.00	
Total: Donations		15.00		1,057.00	
Revenue from Operations					
Rental Revenue				401.00	
Project Administration	2,974.60				
DOS service agreement			11,750.00	10,500.00	
New Horizons		23,817.79			
Age Friendly - DoS			13,190.00		
Membership revenue				1,800.00	
Miscellaneous Revenue	231.66	1,572.50		2,667.26	
Total: Revenue from Operations	3,206.26	25,390.29	24,940.00	15,368.26	
Other Revenue					
Bank Interest and Revenue	4.12		10.55	7.83	
Total: Other Revenue	4.12	-	10.55	7.83	
TOTAL REVENUE	3,210.38	25,405.29	24,950.55	16,433.09	69,999.31
EXPENSE					
Building Operation Expenses					
Telephone and Data				100.00	
Total: Building Operation Expenses				100.00	
Administrative Expenses					
Insurance Expenses	1,772.00				
Administration	715.36	3,424.29	22,046.10	2,473.10	
Office Supplies	19.22	1,864.05	31.50	486.11	
Postage/Courier Expenses				40.00	
Travel		178.38			
Facility rental	200.00	860.06	205.00	2,950.00	
Advertising and Promotion	49.77	2,875.06	83.75	1,046.71	
Bank/Interest Expenses				(0.09)	
Miscellaneous Admin Expenses		319.75		1,152.58	
Total: Administrative Expenses	2,756.35	9,521.59	22,366.35	8,148.41	
Organization Expenses					
Organizational Development/Planning		410.35			
Organizational Membership	75.00			255.00	
AGM and Annual Report	213.61				
Volunteer/Member Expenses				50.00	
Fundraising Expenses			187.12	837.24	
Other Organizational Expenses			182.59	67.54	
Total: Organizational Expenses	288.61	410.35	369.71	1,209.78	
Personnel Expenses					
Professional Fees (Contractor)		4,450.00	2,000.00		
WCB Expenses			137.90		
Professional Development		1,400.00		195.00	
Total: Personnel Expense		5,850.00	2,137.90	195.00	
Special Delivery Services					
Honorarium		360.00			
Special Events		5,399.06			
Material and Supplies				49.11	
Total: Service Delivery Expenses		5,759.06	-	49.11	
TOTAL EXPENSE	3,044.96	21,541.00	24,873.96	9,702.30	59,162.22
NET INCOME	165.42	3,864.29	76.59	6,730.79	10,837.09